

SKAGAFJORDUR ARCHAEOLOGICAL SETTLEMENT SURVEY

Primary Investigators: Prof. John Steinberg Ph.D.
Prof. Douglas Bolender Ph.D.

SITE Stora Seyla 104
 AREA C
 CONTEXT # 156
 FIND # 83
 FIND DATE 28 July 2008
 FINDING ARCHAEOLOGIST KEG

OBJECT DESCRIPTIVE TITLE Ring topped pin
 MATERIAL Bronze
 DISTINGUISHING MARKS 4 impressed dots on the top of the pin head, 4 impressed dots on the back of the pin head, 4 impressed dots in triangles in the corners of the front of the pin head, 3 to 5 shallow lines cast into the surface of the front of the pin head and 1 in the back of the pin head. Classic chevron pattern running down the sides of the about 0.7cm line in between them set on each side of the pin shank just below the head.
 LENGTH Total 11.6cm, pin 10.4cm, ring 1.6cm
 WIDTH Pin head 0.8cm, pin shank 0.4cm, ring 1.8cm,
 THICKNESS Ring avg. 0.35cm, pin head 0.6cm
 WEIGHT Weight after corrosion removal 16.2g

CONSERVATOR Josiah Wagener
 DATE OF EXAMINATION 29 July 2008 DATE OF COMPLETION

PHOTOGRAPHS	BT-before treatment	DT-during treatment	AT-after treatment
BT1	Front		p.3
BT2	Back		p. 3
BT3	Side		p. 4
BT4	Side		p. 4
BT5	Front, close-up of ring		p. 5
BT6	Back, close-up of ring		p. 5
BT7	Front, close-up of pin		p. 6
BT8	Back, close-up of pin		p. 6
BTpmic1	Back, magnification of ring		p. 7
DTpmic1	Front, magnification of ring		p. 7
DT1	Front		p. 8
DT2	Back		p. 9

MATERIALS ANALYSIS

SAMPLE and LOCATION	ANALYTICAL METHOD	FINDINGS
Pin head	X-ray fluorescence spectroscopy	

I. DESCRIPTION

- ❖ **Summary:** Bronze ringed pin of an Irish style with a round un-splayed shank, polyhedral flared head, and plain ring of round cross section crimped loosely into the head of the pin. The shank is curved slightly toward the more decorated face of the head (hereafter referred to as the front). The head of the pin is decorated with dots in the corner facets of the polyhedron, engraved triangles in the lower corner facets, Much of the surface shows extensive file marks, especially on the ring.

II. CONDITION

- ❖ **Summary:** Generally good condition, except for a large number of blisters of deep corrosion on all parts of the pin and ring.
- **Structure:** There are signs of considerable use wear on both ends of the ring and the corresponding socket holes of the pin head.
- **Surface:** The surface is pocked in numerous places with aggressive corrosion blisters. The surface immediately around the blisters is fragile, undermined by corrosion, and crumbles easily. Most of the rest of the surface appears highly polished. The area around the point of the pin is the most extensively corroded. The front surface of the pin is also more corroded than the back surface.

III. TREATMENT PROPOSAL

The surface will be cleaned of corrosion by mechanical means.

Though not presently available in this lab it might be advisable to utilize a passivating treatment such as BTA to treat for potential chlorides in the corrosion blisters.

IV. FACTORS INFLUENCING TREATMENT

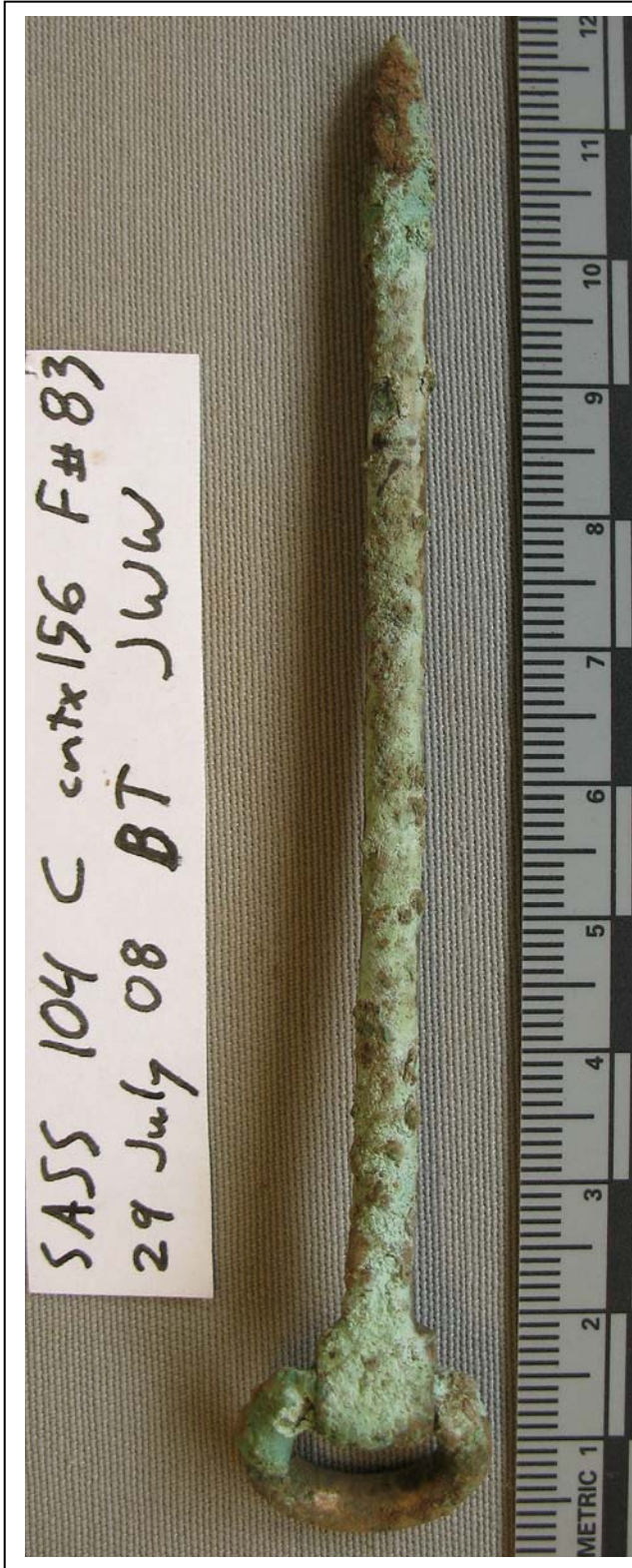
N/A.

V. TREATMENT CONDUCTED

Corrosion was removed from the surface mechanically using a scalpel under 20x magnification.

VI. RESULTS

Ongoing treatment. Object stabilized.



SASS104(C[156]F83.BT1.front



SASS104(C[156]F83.BT2.back



SASS104(C)[156]F83.BT3.PL



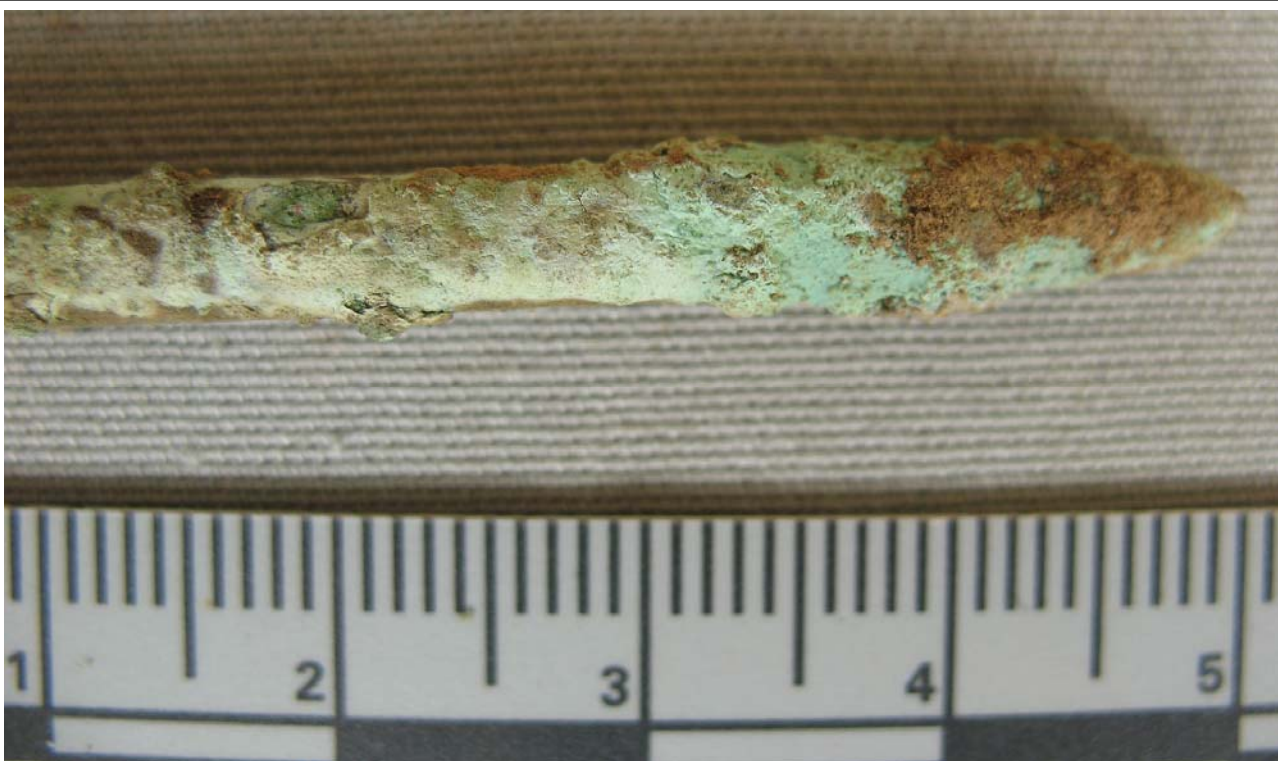
SASS104(C)[156]F83.BT4.PR



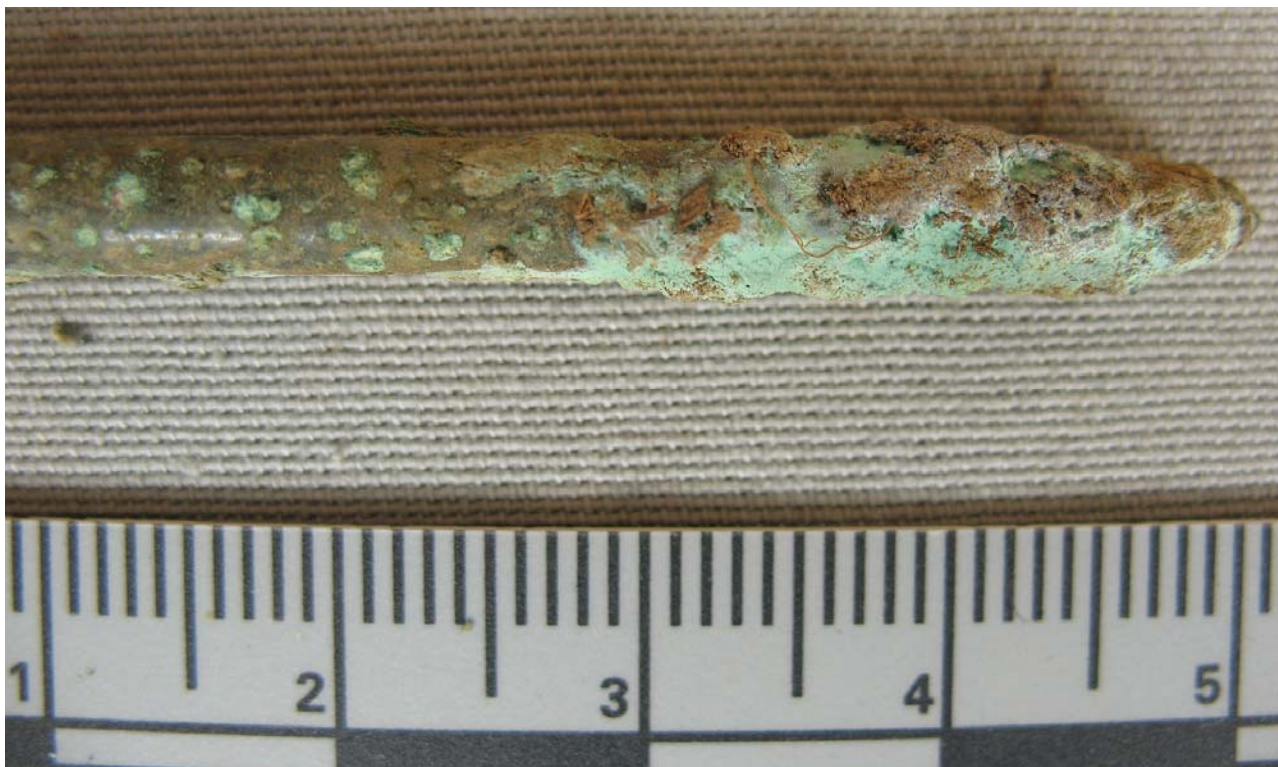
SASS104(C[156]F83.BT5.front



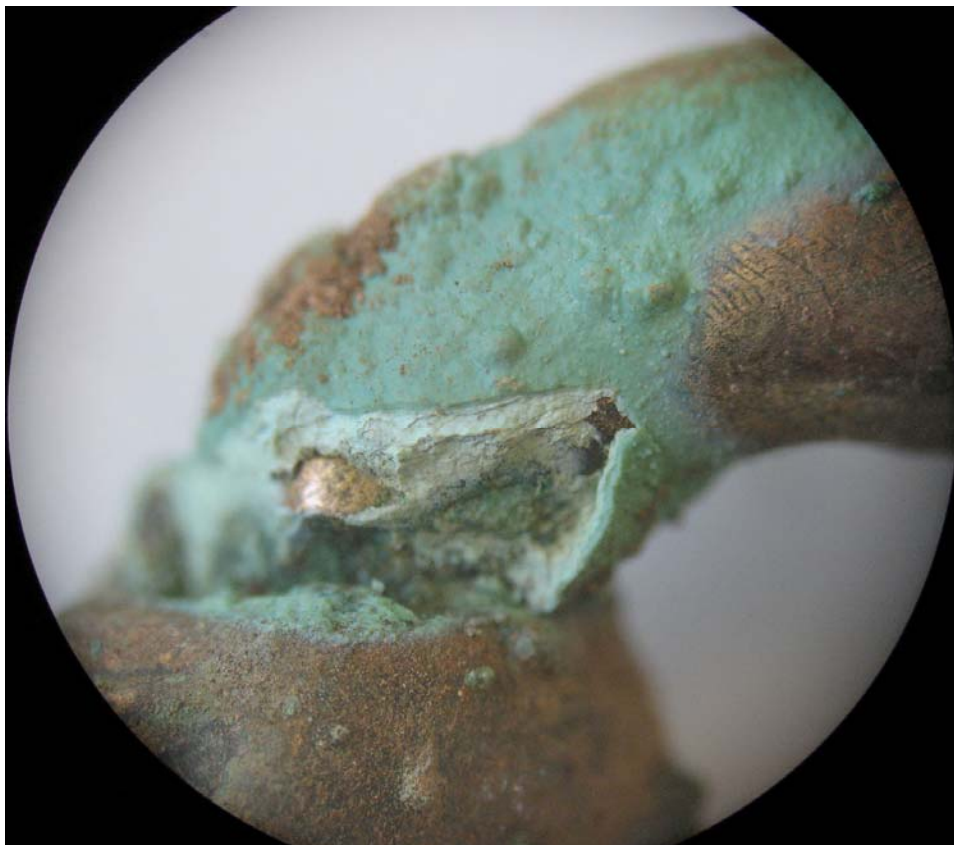
SASS104(C[156]F83.BT6.back



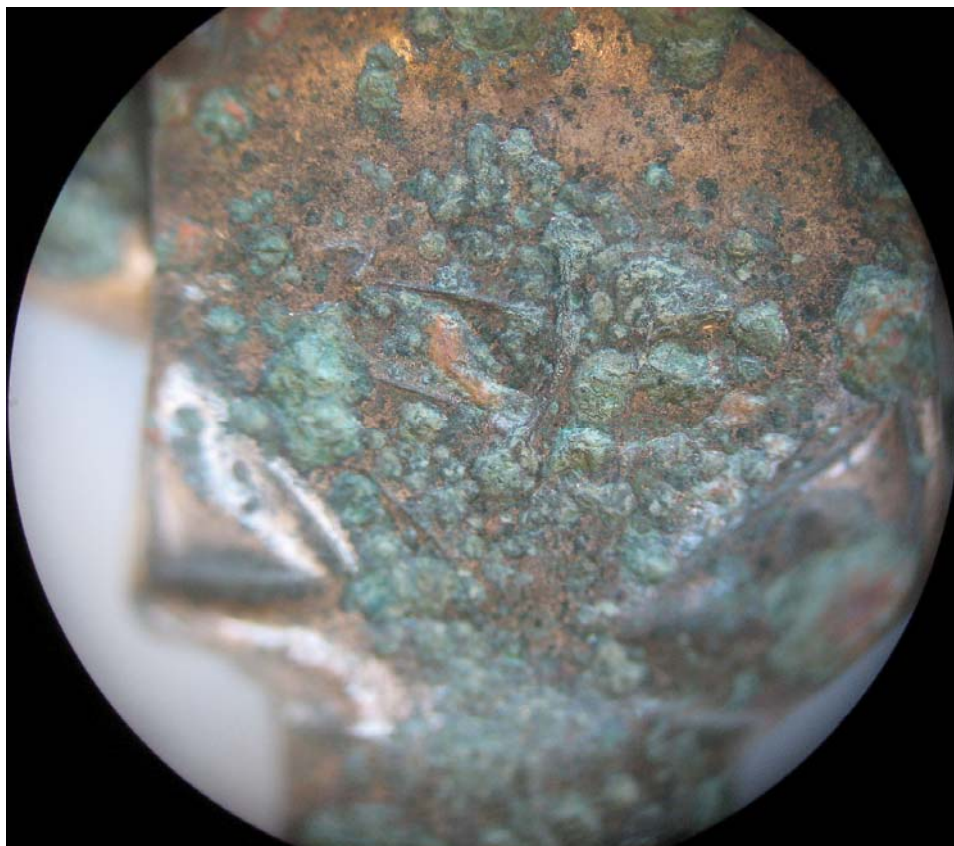
SASS104(C[156]F83.BT7.front



SASS104(C[156]F83.BT8.back



SASS104(C[156]F83.BTpmic1.back



SASS104(C[156]F83.DTpmic1.front



